

LEPRE1 Antibody (Center)
Purified Rabbit Polyclonal Antibody (Pab)
Catalog # AP20704c**Specification**

LEPRE1 Antibody (Center) - Product Information

Application	WB,E
Primary Accession	Q32P28
Other Accession	Q9R1J8 , Q3V1T4
Reactivity	Human
Predicted	Mouse, Rat
Host	Rabbit
Clonality	Polyclonal
Isotype	Rabbit IgG
Calculated MW	83394

LEPRE1 Antibody (Center) - Additional Information**Gene ID** 64175**Other Names**

Prolyl 3-hydroxylase 1, Growth suppressor 1, Leucine- and proline-enriched proteoglycan 1, Leprecan-1, LEPRE1, GROS1, P3H1

Target/Specificity

This LEPRE1 antibody is generated from a rabbit immunized with a KLH conjugated synthetic peptide between 499-533 amino acids from the Central region of human LEPRE1.

Dilution

WB~~1:1000

E~~Use at an assay dependent concentration.

Format

Purified polyclonal antibody supplied in PBS with 0.09% (W/V) sodium azide. This antibody is purified through a protein A column, followed by peptide affinity purification.

Storage

Maintain refrigerated at 2-8°C for up to 2 weeks. For long term storage store at -20°C in small aliquots to prevent freeze-thaw cycles.

Precautions

LEPRE1 Antibody (Center) is for research use only and not for use in diagnostic or therapeutic procedures.

LEPRE1 Antibody (Center) - Protein Information**Name** P3H1 ([HGNC:19316](#))

Function Basement membrane-associated chondroitin sulfate proteoglycan (CSPG). Has prolyl 3-hydroxylase activity catalyzing the post- translational formation of 3-hydroxyproline in -Xaa-Pro-Gly- sequences in collagens, especially types IV and V. May be involved in the secretory pathway of cells. Has growth suppressive activity in fibroblasts.

Cellular Location

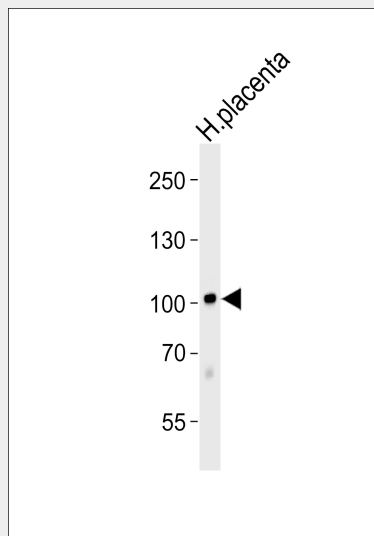
[Isoform 1]: Endoplasmic reticulum

LEPRE1 Antibody (Center) - Protocols

Provided below are standard protocols that you may find useful for product applications.

- [Western Blot](#)
- [Blocking Peptides](#)
- [Dot Blot](#)
- [Immunohistochemistry](#)
- [Immunofluorescence](#)
- [Immunoprecipitation](#)
- [Flow Cytometry](#)
- [Cell Culture](#)

LEPRE1 Antibody (Center) - Images



Western blot analysis of lysate from human placenta tissue lysate, using LEPRE1 Antibody (Center)(Cat. #AP20704c). AP20704c was diluted at 1:1000. A goat anti-rabbit IgG H&L(HRP) at 1:5000 dilution was used as the secondary antibody. Lysate at 35ug.

LEPRE1 Antibody (Center) - Background

Basement membrane-associated chondroitin sulfate proteoglycan (CSPG). Has prolyl 3-hydroxylase activity catalyzing the post-translational formation of 3-hydroxyproline in -Xaa-Pro-Gly- sequences in collagens, especially types IV and V. May be involved in the secretory pathway of cells. Has growth suppressive activity in fibroblasts.

LEPRE1 Antibody (Center) - References

Kaul S.C.,et al.Oncogene 19:3576-3583(2000).

Ota T.,et al.Nat. Genet. 36:40-45(2004).
Otsuki T.,et al.DNA Res. 12:117-126(2005).
Kalnine N.,et al.Submitted (MAY-2003) to the EMBL/GenBank/DDBJ databases.
Cabral W.A.,et al.Nat. Genet. 39:359-365(2007).